



October 7 - 14, 2019

[Vice President for Academic Affairs Open Forums](#) | [Tunnel of Oppression](#)
[Pizza with the President](#) | [Campus Dining Survey](#)

Monday, October 7

Mindful Mondays

1:30 p.m. | 2nd Floor of the Lorraine Tegan Learning Commons

Is stress getting in the way of your academics and life? Join us on Mondays as we explore fun and useful techniques for centering and increasing awareness!



REGIS COUNSELING SERVICES PRESENTS

DOG THERAPY

Monday, Oct. 7th, 2019 | 4 - 5pm | Upper Student Center

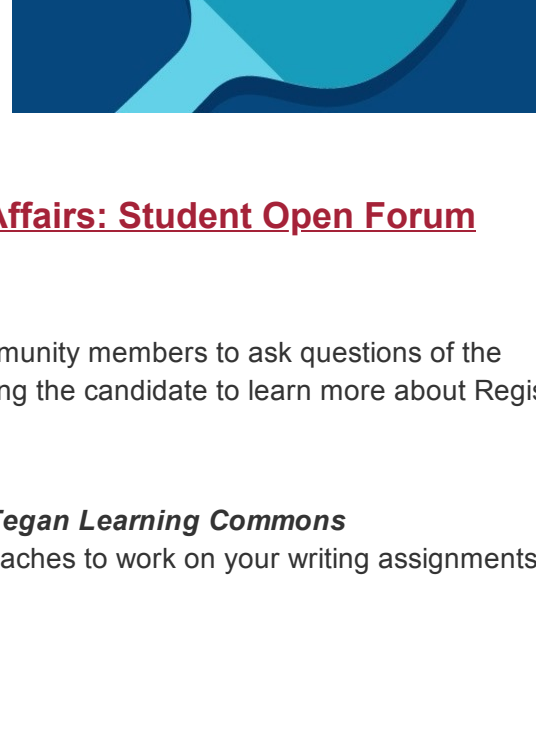
This is a break and relax with Cooper the Labrador in the Upper Student Center. Cooper and his owner will be "pet therapy team" screened and certified by the Pets and People Foundation.

Tuesday, October 8

Just Mercy Book Club

11:30 a.m. | Newman Room, 2nd Floor of the Lorraine Tegan Learning Commons

This is an opportunity for you to explore your ideas and reactions to the common read, Just Mercy.



Anatomy and Physiology I Study Group

12:30 p.m. | 2nd Floor of the Lorraine Tegan Learning Commons

Anatomy and Physiology study groups meet regularly to discuss matters of common interest.

Women's Soccer vs. Rivier

3:30 p.m. | Regis

Ping Pong Tournament

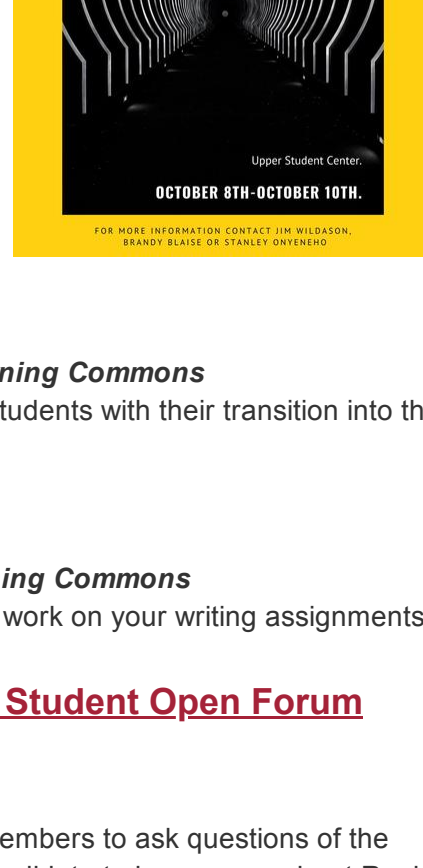
7 p.m. | Lower Student Center

Wednesday, October 9

Tunnel of Oppression

10 a.m. - 6 p.m. | Upper Student Center

An interactive and immersive diversity and inclusion event, participants are put in the shoes of someone who has been oppressed for a particular identity. Participants will witness powerful imagery, sobering statistics, and a glimpse of how people are oppressed for being themselves. The event is a self-guided experience with staff support at the event for discussion and debrief. This event is open to the community and there is no required length of time, but it is encouraged to spend between 15-30 minutes to take in everything. Please contact [Jim Wilgason](#) with any questions.



First Year Seminar Cafe

10 a.m. | 2nd Floor of the Lorraine Tegan Learning Commons

These events are designed to support incoming students with their transition into the academic and co-curricular experience at Regis.

EN 105 Learning Community

2 p.m. | 2nd Floor of the Lorraine Tegan Learning Commons

Gather with your peers and academic coaches to work on your writing assignments.

Vice President for Academic Affairs: Student Open Forum Session

3 p.m. | College Hall 202

This forum offers an opportunity for community members to ask questions of the candidate, while at the same time, allowing the candidate to learn more about Regis.

Field Hockey at Eastern Connecticut State

4 p.m. | Eastern Connecticut State

Wellness Wednesdays: Yoga

4:30 p.m. | Maria Hall Dance Studio

Pizza with the President

5 p.m. | College Hall Foyer

Join President Hays and your Student Government Association for a slice of pizza and an opportunity to speak about issues that are important to you on campus!

Women's Volleyball at Colby-Sawyer

7 p.m. | Colby-Sawyer

Men's Soccer at Albertus Magnus

7:30 p.m. | Albertus Magnus

Thursday, October 10

EN 105 Learning Community

12:30 p.m. | 2nd Floor of the Lorraine Tegan Learning Commons

Gather with your peers and academic coaches to work on your writing assignments.



TEA (Thursday English Afternoons)

3 p.m. | 2nd Floor of the Lorraine Tegan Learning Commons

Are you looking for casual English conversation practice? Or, are you interested in learning about cultures different from your own? Join us for T.E.A!

Accountabili-buddies

3:30 p.m. | 2nd Floor of the Lorraine Tegan Learning Commons

accountabilibuddy (noun); blending, a person who assists another in keeping them responsible for their actions and to prevent them from doing certain things. Did you know that people are 65% more likely to accomplish a goal after making a commitment to someone? Even better than that... if you have a specific accountability meeting time with someone else, you will increase your chance of success by up to 95%!

Women's Tennis vs. Worcester State

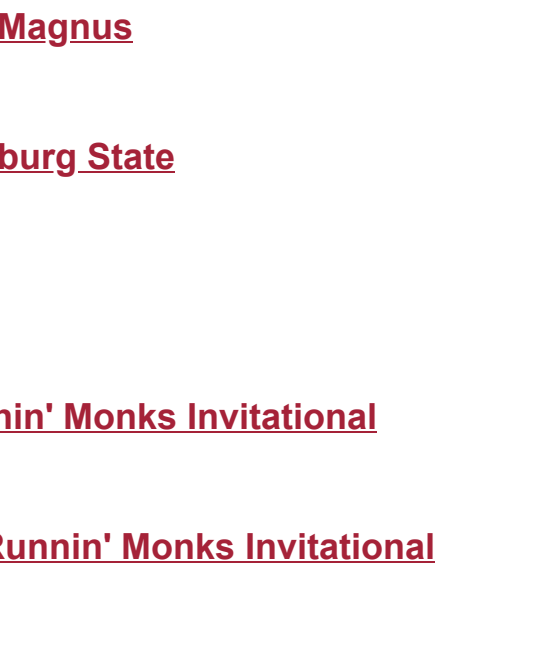
3:30 p.m. | Regis

Friday, October 11

Anatomy and Physiology I Study Group

11 a.m. | 2nd Floor of the Lorraine Tegan Learning Commons

Anatomy and Physiology study groups meet regularly to discuss matters of common interest.



Kairos Retreat

2:30 p.m. | Prindle Pond Retreat Center

Women's Volleyball at WPI

11 a.m. | WPI

Women's Soccer at Albertus Magnus

12 p.m. | Albertus Magnus

Field Hockey at Lasell

12 p.m. | Lasell

Women's Swimming and Diving at University of New England

12 p.m. | University of New England

Men's Swimming and Diving at University of New England

12 p.m. | University of New England

Women's Tennis at Albertus Magnus

1 p.m. | Albertus Magnus

Women's Volleyball vs. Fitchburg State

1 p.m. | WPI

Men's Soccer at Suffolk

3 p.m. | Suffolk

Men's Cross Country at Runnin' Monks Invitational

4 p.m. | Saint Joseph's College

Women's Cross Country at Runnin' Monks Invitational

4 p.m. | Saint Joseph's College

Trivia with Tre

7:30 p.m. | Lower Student Center

Put your knowledge to the test and compete in this spooky themed trivia night hosted by CSE's own Trevon Wright!

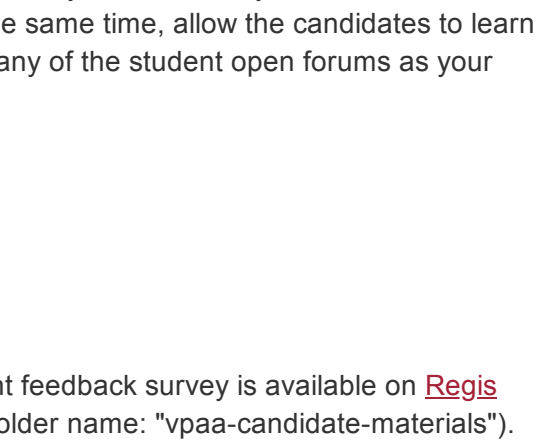
Monday, October 14

Columbus Day | No Classes

Apple Picking Farms

10 a.m. | Shelburne Farms

Join CSE for a trip to Shelburne Farms for a day of apple picking, cider, and fall fun! Tickets can be purchased in the Center for Student Engagement, Lower Student Center room 111 (\$10 for Regis students and \$15 for guests). **The bus will depart from the College Hall Foyer at 10 a.m. and will depart the farm at 3 p.m.** Ticket includes transportation, one bag of self picked apples, cider, and hay ride.

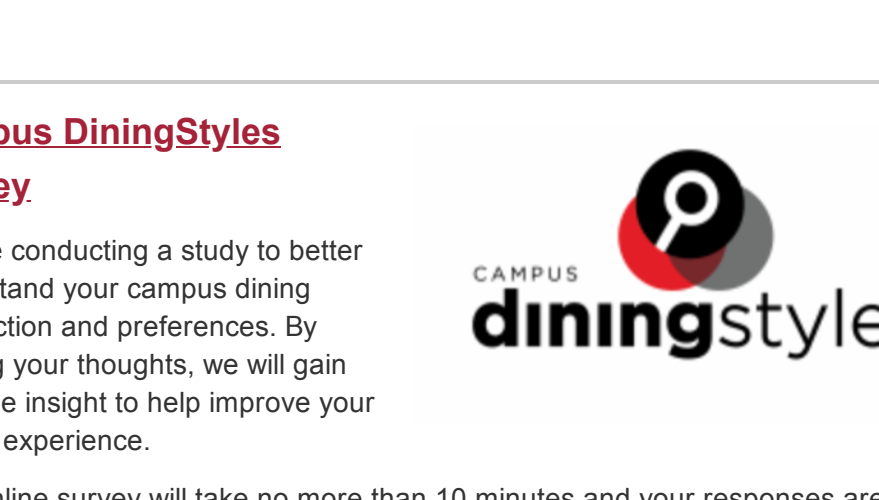


Men's Soccer vs. Pine Manor

1 p.m. | Regis

[Click here for a full list of campus events >>](#)

CAMPUS ANNOUNCEMENTS



Vice President for Academic Affairs Student Open Forums

Regis College is in the process of a nationwide search for a Vice President for Academic Affairs. Four finalists have been invited back to campus to meet our community. Open forums offer an opportunity for community members to ask questions of the candidates, while at the same time, allow the candidates to learn more about Regis. Please attend as many of the student open forums as your schedule will allow.

Tuesday, October 8

3 - 3:45 p.m. | College Hall 202

Wednesday, October 9

3 - 3:45 p.m. | College Hall 202

Candidate information and an important feedback survey is available on [Regis Resources](#) in the documents section (folder name: "vpaa-candidate-materials"). Please submit your feedback survey by Thursday, October 10 at 5 p.m.

For those not able to attend in person, please participate via Zoom by [clicking here](#) (<https://regiscollege.zoom.us/j/371669394>). All student open forum sessions are accessible with the same Zoom link above.

Campus DiningStyles Survey

We are conducting a study to better understand your campus dining satisfaction and preferences. By sharing your thoughts, we will gain valuable insight to help improve your overall experience.



This online survey will take no more than 10 minutes and your responses are confidential. At the end of the survey, you will have an opportunity to enter your contact information if you wish to **enter the drawing for a grand prize of \$150 e-card or 3 first prizes of \$50 e-cards.**

We appreciate your time and thank you for your assistance!

[Click here to take the survey >>](#)

Celebrate National Stamp Collecting Month with STAMPS COME ALIVE

SNAKES ON STAMPS
Herpetologist Dr. Van Wallach of the Harvard Museum of Natural History presents "Everything You Always Wanted To Know About Snakes But Were Afraid To Ask" with live snakes including a boa, several local snakes and some exotic species.
Wednesday Oct. 9 at 7:30 pm and
Saturday Oct. 12 at 10:30 am
Tickets \$5 adults, children \$3

OWLS ON STAMPS
Presentation by Marcia Wilson from "Eyes on Owls"
Two programs with six or seven live owls plus
Slides by Mark Wilson
Sunday Oct. 6 1:00 pm and 3:00 pm
Tickets: \$6 adults \$4 children

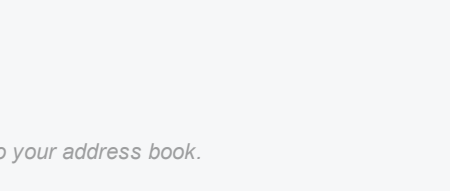
MEET TEDDY ROOSEVELT
Award winning actor Ted Zalewski gives a portrayal of President Teddy Roosevelt
Sunday Oct. 20 2:00 pm
Tickets: \$6 Adults \$3 Teenagers

MEET AMELIA EARHART
Award winning actress Sheryl Faye gives a portrayal of the famous aviatrix Amelia Earhart
Saturday Oct. 19 10:30 am
Tickets: \$5 adults \$3 children
Program suitable for all ages.

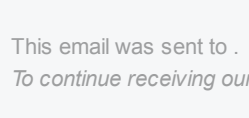
Tickets available at the door or may be ordered in advance (highly suggested for the owl shows)
at info@spellman.org or 781-768-8367
Program supported in part by the Weston Cultural Council

Spellman Museum of Stamps & Postal History
Regis College 241 Wellesley St. Weston, MA 02493
www.spellmannmuseum.org

Follow our social media channels



Share this email:



Manage your preferences | [Opt out](#) using TrueRemove™
Got this as a forward? [Sign up](#) to receive our future emails.
View this email [online](#).

235 Wellesley Street
Weston, MA | 02493 US

This email was sent to .
To continue receiving our emails, add us to your address book.

[Subscribe](#) to our email list.