



iGrad - MOSIAC - Child Care Grant Available - Events Calendar -
Advising Matters - Career Corner - Regis Library - Graduate
Ambassador Profile - Peer Tips on Time Management

UNIVERSITY ANNOUNCEMENTS

iGrad
AN ALARMING
2/3
OF AMERICANS
do not prepare a detailed household
budget each month that tracks their
income and expenses.

Source: Gallup's annual Economy and Personal Finance survey, conducted April 4-14, 2013

The infographic features a central illustration of a woman with a ponytail, surrounded by icons for a house, a car, a piggy bank, a wallet, and a document with a dollar sign. Below the illustration are three stylized human figures.

Visit iGrad today to learn this
crucial financial skill

iGrad.com/schools/regiscollege

The holidays can mean more spending. Take advantage of iGrad's budgeting tools to help you be in control of your finances this holiday season and all year round.



MOSAIC

an **LGBTQIA+** Support Group

MOSAIC is a therapeutic group with the aim of providing space for LGBTQIA+ and questioning Regis College students to meet, explore and process their experiences and support one another.

First meeting:
Monday **November 15th** at **5 pm**
meets every other week



Led by: Alex Vlavianos (they/them)
Counseling Intern

If you are interested please email
alex.vlavianos@regiscollege.edu

Mosaic is intended to be a space for LGBTQIA+ and questioning students only, we recommend students interested in being allies seek out the **Regis GSA**



Child Care Access Means Parents in School (CCAMPIS) Grant

Through funds from the Child Care Access Means Parents in School (CCAMPIS) Grant, Regis is able to provide vouchers to undergraduate and graduate student-parents working on their education. Vouchers help minimize the cost of childcare at on campus or off campus child care programs.

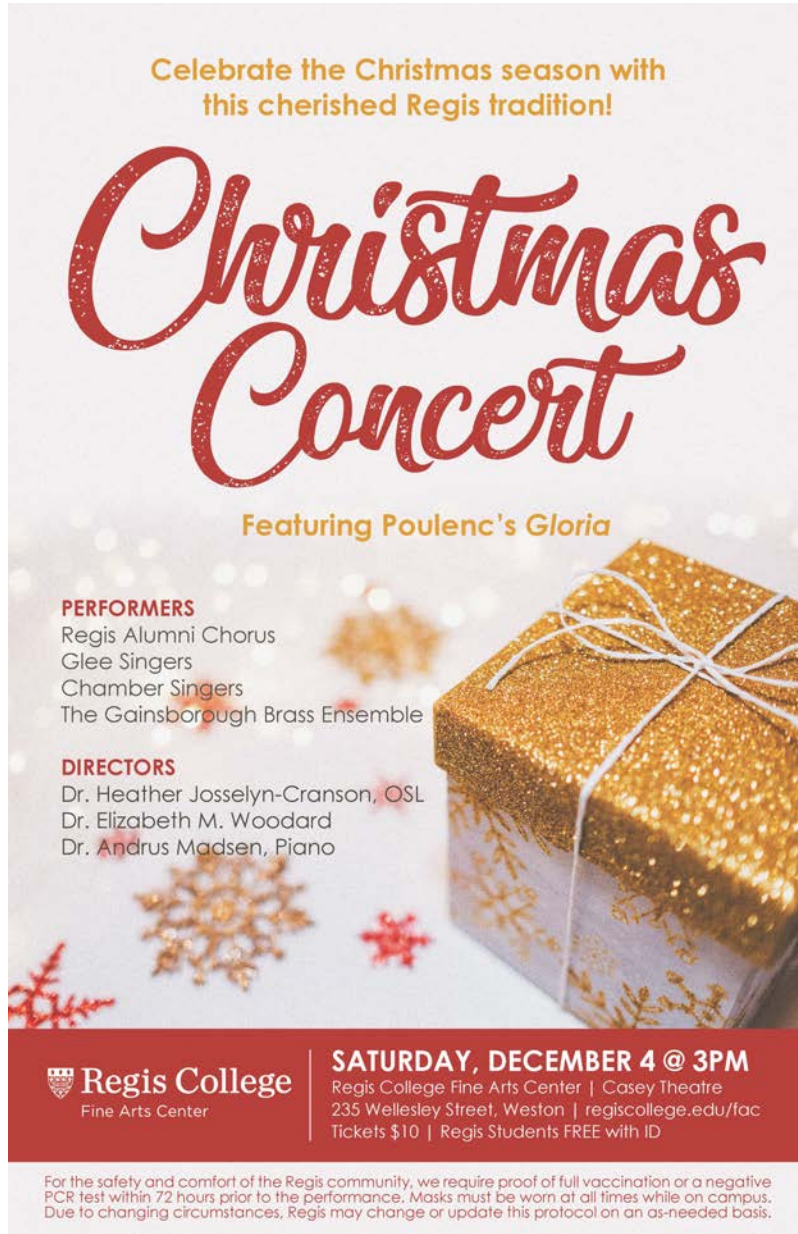
Student-parent applicants are considered for child care assistance through CCAMPIS funding on the basis of eligibility status, financial need, and family contribution levels. For more information please click [here](#) or contact Rebecca Putnam at rebecca.putnam@regiscollege.edu.

EVENTS CALENDAR

Christmas Tree Lighting

Thursday, December 2 | 4:30 p.m. | Quad

Join the Center for Student Engagement and the Regis clubs and organizations for the annual Christmas Tree Lighting and holiday refreshments and festivities!



Celebrate the Christmas season with this cherished Regis tradition!

Christmas Concert

Featuring Poulenc's Gloria

PERFORMERS
Regis Alumni Chorus
Glee Singers
Chamber Singers
The Gainsborough Brass Ensemble

DIRECTORS
Dr. Heather Josselyn-Cranson, OSL
Dr. Elizabeth M. Woodard
Dr. Andrus Madsen, Piano

Regis College
Fine Arts Center

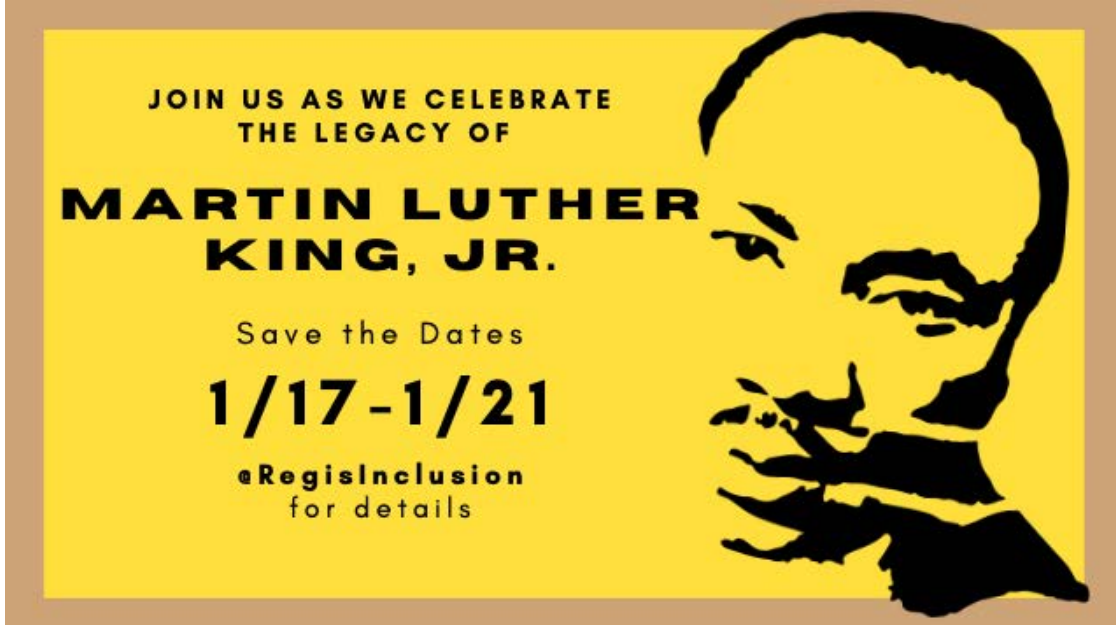
SATURDAY, DECEMBER 4 @ 3PM
Regis College Fine Arts Center | Casey Theatre
235 Wellesley Street, Weston | regiscollege.edu/fac
Tickets \$10 | Regis Students FREE with ID

For the safety and comfort of the Regis community, we require proof of full vaccination or a negative PCR test within 72 hours prior to the performance. Masks must be worn at all times while on campus. Due to changing circumstances, Regis may change or update this protocol on an as-needed basis.

Accelerated Nursing Pinning Ceremony

Monday, December 20 | 1 p.m. | Fine Arts Center

The nursing pinning ceremony offers our accelerated bachelor's and direct entry master's nursing students the opportunity to honor and celebrate their achievements and their journey to becoming a nurse. Contact [Donna Glynn](#) for information.



GRADUATE & PROFESSIONAL STUDENT AFFAIRS



Course registration for **Intersession 2022** and **Spring 2022** is open in [Regis Hub](#). You may find these [tutorial videos](#) helpful for navigating this system.

If you have not yet registered for classes, we encourage you to do so as soon as possible so that you continue to make progress towards degree completion. Please complete the **Financial Responsibility Agreement** on [Regis Hub](#) prior to registering for classes.

Course instructional methods:

- **In Person Lecture** – these courses will have an in-the-classroom/in-person component, possibly combined with additional remote sessions
- **In Person Lab** - these courses will have an in-the-classroom/in-person component, possibly combined with additional remote sessions
- **Zoom Synchronous Lecture** – fully remote; during published scheduled dates/times
- **Zoom Synchronous Lab** – fully remote; during published scheduled dates/times
- **Asynchronous Lecture** – fully online; no scheduled dates/times
- **Asynchronous Lab** – fully online; no scheduled dates/times

For additional questions, students are strongly encouraged to contact their advisor. Advisor information is located under the “My Success Network” tab on [Starfish](#), or

by checking their account in the Student Planning application and clicking “Plan your Degree and Register for Classes” followed by the Advising tab.

Thank you to everyone who has already completed their course registration. We wish you a successful end to the fall semester!

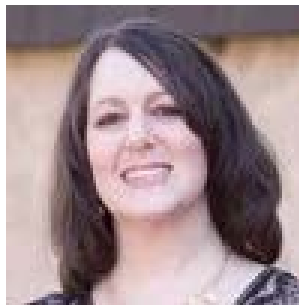
Sincerely,

[Joanne Cardolaccia](#)

Director, Graduate Student Services & Advising



Happy December from [Graduate Career Planning](#)! It's hard to believe that the end of the calendar year is around the corner. For those that don't know me, I'm **Sue Levine** and I'm thrilled to have joined the Graduate Affairs team as the Interim Career Counselor for the remaining Fall '21 and upcoming Spring '22 semester. I'm available to virtually meet with students for career advising, including internship or job search guidance. You can sign up for a date and time that works for you [here](#).



Treat Your Job or Internship Search Like an Academic Assignment

As a graduate student, you are likely used to managing assignments and deadlines for your academic work. One way to think about your job or internship search is to imagine it was a long-term assignment. Here are some tips to apply a similar framework to your search:

#1 – Identify your goal / understand the assignment

Is your goal full-time employment, an internship, clinical, or practicum? Your first step is to identify your goal so that you can stay focused.

#2 – Scaffold, or break the assignment down into manageable steps, for example:

1. Search the Regis College [CareerLink](#) for jobs of interest. Pay particular attention to the job description and requirements. Make note of any employers or positions that seem interesting to you.

2. Write a first draft of your resume and cover letter - or update a current draft.
3. [Request a resume and cover letter review](#) from Graduate Career Services.
4. Review your [LinkedIn](#) profile and update if necessary.
5. Customize your application materials for specific positions and apply.

#3 – Create your own deadlines

You'll be more accountable to yourself if you set target dates for your tasks. Use a to-do list, spreadsheet, calendar, or whatever system works for you.

#4 – Prioritize and schedule

Faculty have due dates for assignments, and you likely adhere to those. Schedule an appointment with yourself every week or every two weeks in your calendar to focus on a career activity from your list. This way you're more likely to adhere to your plan.

#5 – Be Flexible

You typically have less control over the final outcome with your job or internship search than an academic assignment. And, job search is an iterative process with ups and downs along the way. Keep revisiting your plan, make adjustments, and remember the journey takes some people longer than others. To get career support (or just a pep talk!) [schedule an appointment with Sue Levine, Graduate Career Advisor](#). We look forward to working with you!

DECEMBER CAREER RESOURCE HIGHLIGHT: NURSING

www.incrediblehealth.com/blog/nursing-interview-questions/

www.passportsandpreemies.com/travel-nursing-whats-that/

www.nursetogether.com/25-sample-nursing-interview-questions-you-s/

www.passportsandpreemies.com/10-red-flags-to-be-aware-of-when-applying-for-nursing-jobs/

www.passportsandpreemies.com/the-best-questions-to-ask-in-a-nursing-interview/



Many of you will encounter assignments that require you to identify research instruments (e.g., inventories, tools, questionnaires, etc.) or articles that use a particular test or measure. As you probably know, research instruments are tools used to collect, measure, and analyze data related to your area of interest. For those of you working on scholarly practice projects or dissertations, finding an instrument to use in your research can be a time-consuming task!

Our guide, [Research Instruments \(Tests & Measures\)](#), is a great starting place to begin your search. It includes information on how to use both the library's databases and online sources to find research instruments. In particular, there are video

tutorials and written instructions that will help you use [CINAHL](#), [APA PsycInfo](#), and [ERIC](#) to find articles that use instruments to conduct their research. There are also resources for [locating published, unpublished, and free research instruments](#).

Once you've identified an instrument to use in your research for your SPP or dissertation, make sure to obtain permission from the copyright holder! For more information on permissions, click [here](#) or check out our [Copyright and Permissions](#) guide.

Please feel free to reach out to the library if you have any questions! We're always happy to help! You can e-mail us at reference@regiscollege.edu or schedule an appointment using our [Research Consultation Request form](#). Our updated library hours can be found on the library's [website](#).

Meet the Regis College Graduate Ambassadors



Jennifer Scott Forry, Ed.D. '20

Dean of Students/Chief Student Affairs Officer, Emmanuel College

As a Dean of Students, I utilize my Regis education every single day. The ability to put theory and scholarly work into practice has made me a better practitioner, colleague, and leader. I utilize aspects of my coursework and degree to navigate complex problems which allows me to serve as the principal decision maker for my division.



Tips from your Peers on Time Management

We've heard from many of you about how hard it is to manage your time effectively with so much going on. Each month we will share a tip from one of your peers who

have had success with managing their time.

Margaret Duggan (PMHNP)

“Audio textbooks so you can 'read' while commuting, exercising, cooking dinner, etc.”

Great idea, Margaret. Thank you! Now, it's your turn to share your sage wisdom. If you have a tip to share for an upcoming issue of GradWire, please submit it [here](#).

For information about The Learning Commons and tutoring and academic coaching services, please click [here](#).

Regis College, 235 Wellesley Street, Weston, MA 02493, United States

[Unsubscribe](#) [Manage preferences](#)