

Beyond the Horizon: Navigating the Future of Long-Term Care”

- Picture long-term care services as a strong tree with deep roots, ever-growing
- Wind, rain and the river representing the turbulent environment
- Increasing numbers of older persons, decreasing numbers of providers, growth in technology, innovation and insufficient funds all coming together; impacting the future of long-term care services, and
- Older persons wanting to remain at home



4/10/24

2

THE COMMONS IN LINCOLN: A MODEL OF LONG-TERM CARE SERVICES

A CONTINUING CARE COMMUNITY

- Independent Living
- Assisted Living
- Memory Care
- Rehabilitation & Skilled Nursing

4/10/2024



LINCOLN COMMONS: INDEPENDENT LIVING

**Your own cottage or apartment
and community pool**



**Dining together if you
choose**



Or just Relaxing

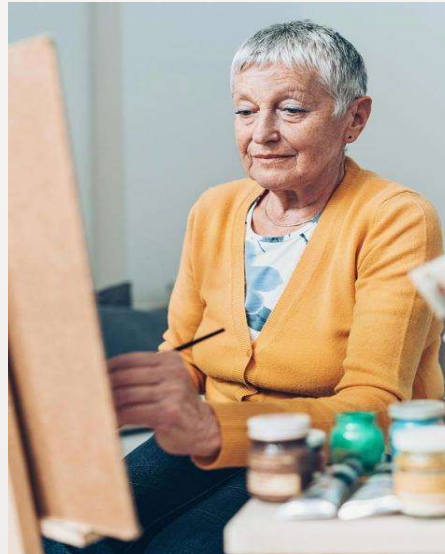


ASSISTED LIVING: THE BALANCE BETWEEN ASSISTANCE AND INDEPENDENCE.

Your own Comfortable Apartment



Activities on and off Campus



Chef Prepared Meals



5

MEMORY CARE – HOME-LIKE ENVIRONMENT AND

Current events, Walking, Art, Singalong, Journey stations, Fitness

-
- Housekeeping and laundry,
 - Specially trained staff,
 - Private dining room,
 - Personalized care,
 - Activities,
 - Socialization

4/10/2024



REHABILITATION AND SKILLED NURSING

Home-like Bed



Rehabilitation



Types of Care

- Cardiac Care
- Wound Management
- Therapy (OT, PT, Speech)
- Post-Surgical Care Social Services
- Dental, Podiatry & Audiology Consults

7

ROLE OF LONG -TERM SERVICES IN THE U. S. TRENDS AND CATALYSTS IMPACTING SENIOR SERVICES

- ❑ Aging population, technological advancement
- ❑ Demographic shift and evolving consumer landscape
- ❑ Historical Models of Care
- ❑ Current Models of Care
- ❑ Future Models of Care
- ❑ Transition Risks

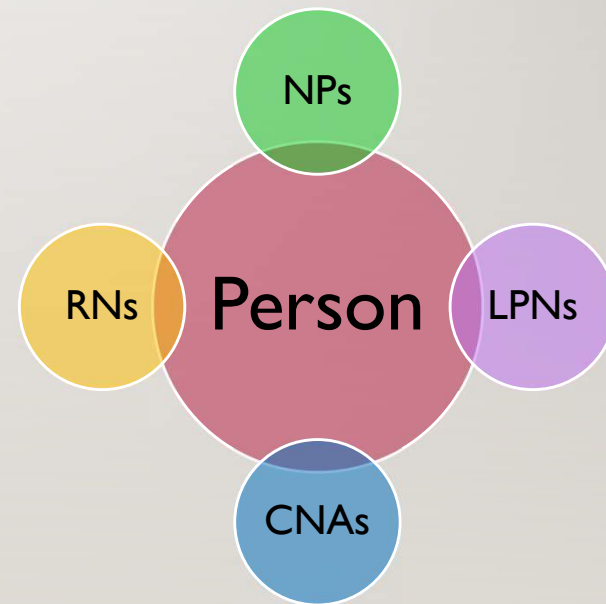
8 REGULATORY FRAMEWORK

- ❑ Highly regulatory environment
- ❑ Post pandemic landscape and impact on service delivery.
- ❑ Mandatory staffing requirements
- ❑ 5 STAR rating system
- ❑ Overall impact on the skilled nursing facility



9 CHANGING ROLES IN LONG-TERM CARE (NP, RN/LPN, AND CNAS)

- ❑ Developing the expertise of the workforce
- ❑ Developing new roles and responsibilities



DEVELOPING A QUALIFIED WORKFORCE FOR THE FUTURE

- ✓ Recruitment
 - Cost of attracting qualified associates
 - Creativity in hiring talent.
- ✓ Retention
 - Cultural environment
 - Growth opportunities



WORKFORCE TRENDS IN ESTABLISHING A SUSTAINABLE PIPELINE

- ✓ Career Ladder Development
- ✓ Workforce Development Partnerships
- ✓ Grant Funding Opportunities



12 LONG-TERM CARE PAYMENT SYSTEMS

- ✓ Medicare and Insurance
 - Short stay
- ✓ Private Self-Pay
 - Extended Stay in AL/ALF and SNF
- ✓ MassHealth
 - Extended Stay in SNF and limited in AL/ALF
 - Gaps in cost coverage
 - Gaps in services



13 FISCAL TRENDS AND SHARED RISKS

- ✓ Partnerships with Accountable Care Organization
 - Cost per care
 - Risk of rehospitalization
- ✓ Preferred Provider status with insurance companies
- ✓ Best practices



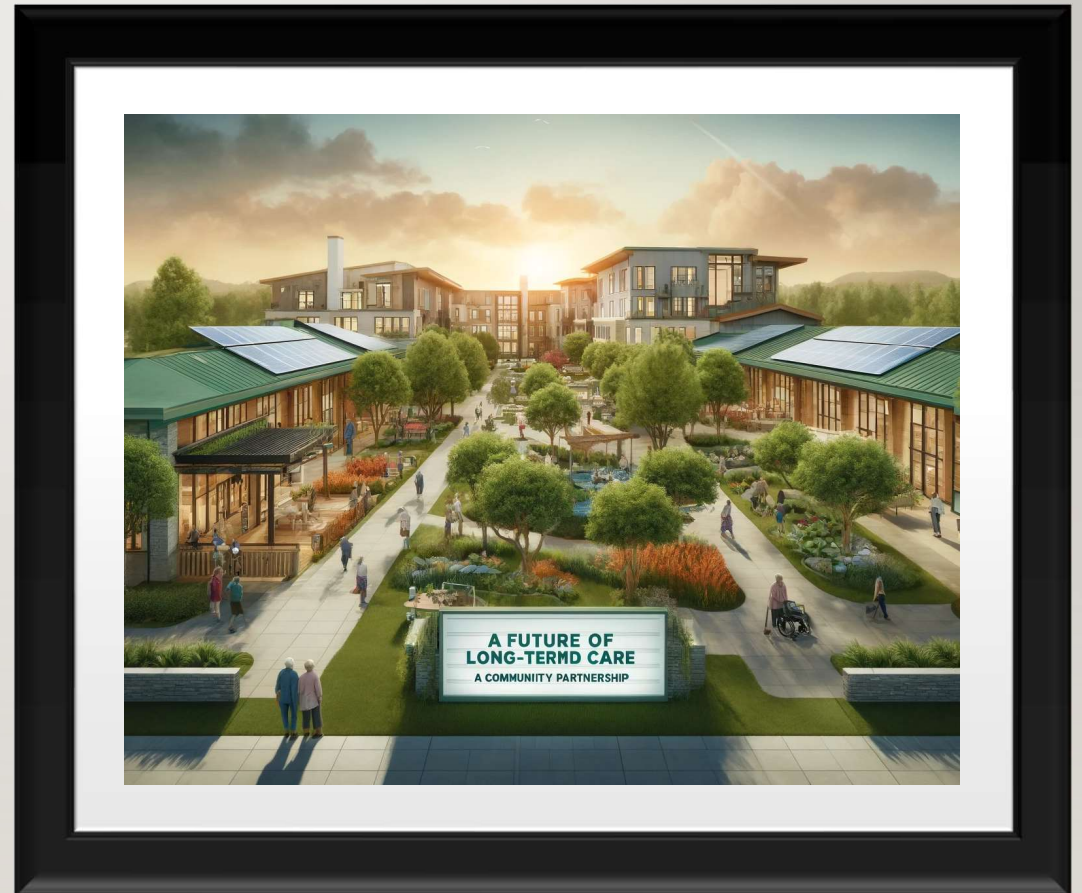
SUMMARY: ACKNOWLEDGING THE PERFECT STORM

- Aging population with different expectation for services
- Movement to community-based Services
- Workforce shrinkage
- Intense regulatory expectations
- Accelerating cost of care with declining reimbursement

15 EMBRACING CHANGE!

- New models care and alignment with community-based service.
- Collaboration in innovation across setting is essential.
- Understanding and utilizing the regulations to boost performance.
- Workforce Pipeline and successful partnerships
- Fiscal strategies and ACO/Insurance partnerships

4/10/2024



16

THANK YOU!

And now
back to Dr. Quigley
Addressing the Financial Issues
\$ \$ \$ \$ \$ \$

QUESTIONS AND ANSWERS

- Don't be shy!
- Type your question in the chat
OR raise your hand to ask your question



TO OUR AUDIENCE – THANK YOU FOR SHARING THIS TIME WITH US!

And a Special Thank You to :

- Harvard Pilgrim Health Care, a Point32 Health organization without whose sponsorship this series wouldn't be possible.
- And to our Panelists: Jake Quigley, DLP, Laurie Roberto, MBA, LNA, and Kellie La Pierre, DNP, GNP-C

If you wish for contact hours or course credit, please return to the Chat for the link to the evaluation.