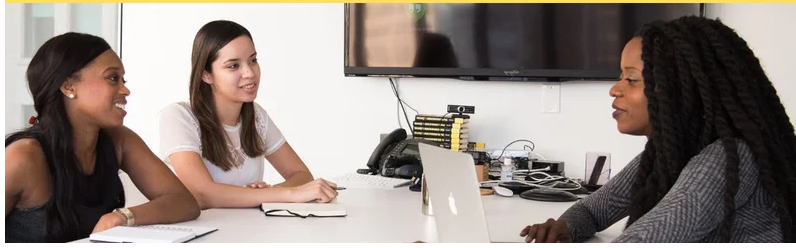




\* open positions \*



## Graduate Assistant Positions Now Available

Are you looking for ways to reduce your tuition?

G.A. positions for Fall 2023 and Spring 2024 are now available to view and apply for! Please visit the [Graduate Assistant webpage](#) for information about the program and to view open positions. Please reach out to [Graduate Affairs](#) with any questions.

---



**Hello Graduate Students,**

Congratulations to those completing degrees this August! Please take a moment to complete the brief survey below to share your next steps with us.



**The National Association of Colleges & Employers (NACE) First-Destination Survey** captures information regarding how graduate, professional and doctoral students fare in their careers within six months of graduation. Please complete this brief survey as we are interested in hearing about your career as you complete your graduate degree at Regis. Thanks so much for your time!

Here's some great Linked-in resources to hone-in on your professional development at ZERO cost!

- [10+ Best LinkedIn Learning Free Courses In 2023 \(Top Picks\)](#)

- 8 learning paths to help you develop your skills — no matter what role or industry you're in



**Kaitlynn M. Arvidson**

Director, Graduate & Professional Career Planning

[Kaitlynn.arvidson@regiscollege.edu](mailto:Kaitlynn.arvidson@regiscollege.edu)

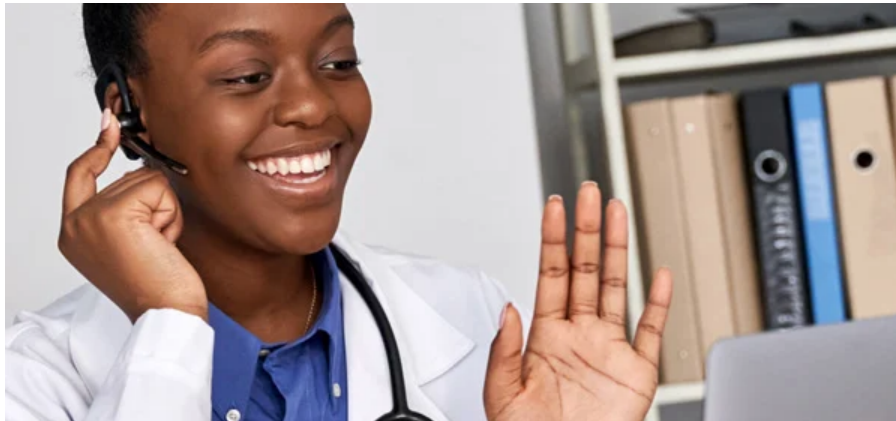
---

## Regis College Library

Do you know how to use information ethically in your research? The ethical use of information avoids plagiarism and academic dishonesty through accurate quoting, paraphrasing, and citing the work of others. Paraphrasing and the ability to honestly and accurately attribute the work of others are essential skills.

For information on how to refine your academic integrity skills, please see our [Academic Integrity & Academic Writing Resources](#) guide.

If you have any questions, please feel free to reach out to the library! You can email us at [reference@regiscollege.edu](mailto:reference@regiscollege.edu) or schedule an appointment to meet with a librarian by using our [Research Consultation Request form](#). Remember to check our website for our [current availability](#)!



## New Certificate Offerings

We wanted to let you know about two new exciting opportunities available to all Regis graduate students and alumni to help you enhance your career and maximize your degree.

You can now earn either an

- **100% Online** format allows for as much flexibility as possible.
- **Benefit from** Regis student-centered faculty.
- **Ideal** for a variety of backgrounds.

Take your next step and learn more about the benefits of these programs, the courses you'll take, and what you need to apply.

## Online Telehealth

## Product Management

---

### Child Care on Campus

Regis College has a [federal grant for childcare access](#), based on income and enrollment status and open to online and Weston-based graduate and undergraduate students. Children of students can be enrolled at the Regis Childcare Center or at a licensed and/or accredited childcare provider or public school-based program near their home. [Click here to learn more!](#)

---

### Online Counseling Services

All Regis students are welcome to use our Student Assistance Program from AllOne Health, which provides students with 24/7 instant access to phone counseling with a mental health professional. Students are also able to request in person or video counseling with a private counselor in their community. Regis offers students **six free** sessions with one of these providers.

For 24/7 "in the moment support" with a mental health professional or to request a counseling referral with the AllOne Health Student Assistance Program, please call **800.756.3124**.

## Orientation Video

## Student Assistance Program Info

Regis College, Office of Graduate Affairs, 235 Wellesley Street, Weston, MA 02493, United States

[Unsubscribe](#) [Manage preferences](#)